

132ND AVE NE

NE 111TH CT

NE 110TH PL

NE 110TH CT

TREE PLAN KEY

TREES TO REMAIN  
 TREES TO BE REMOVED  

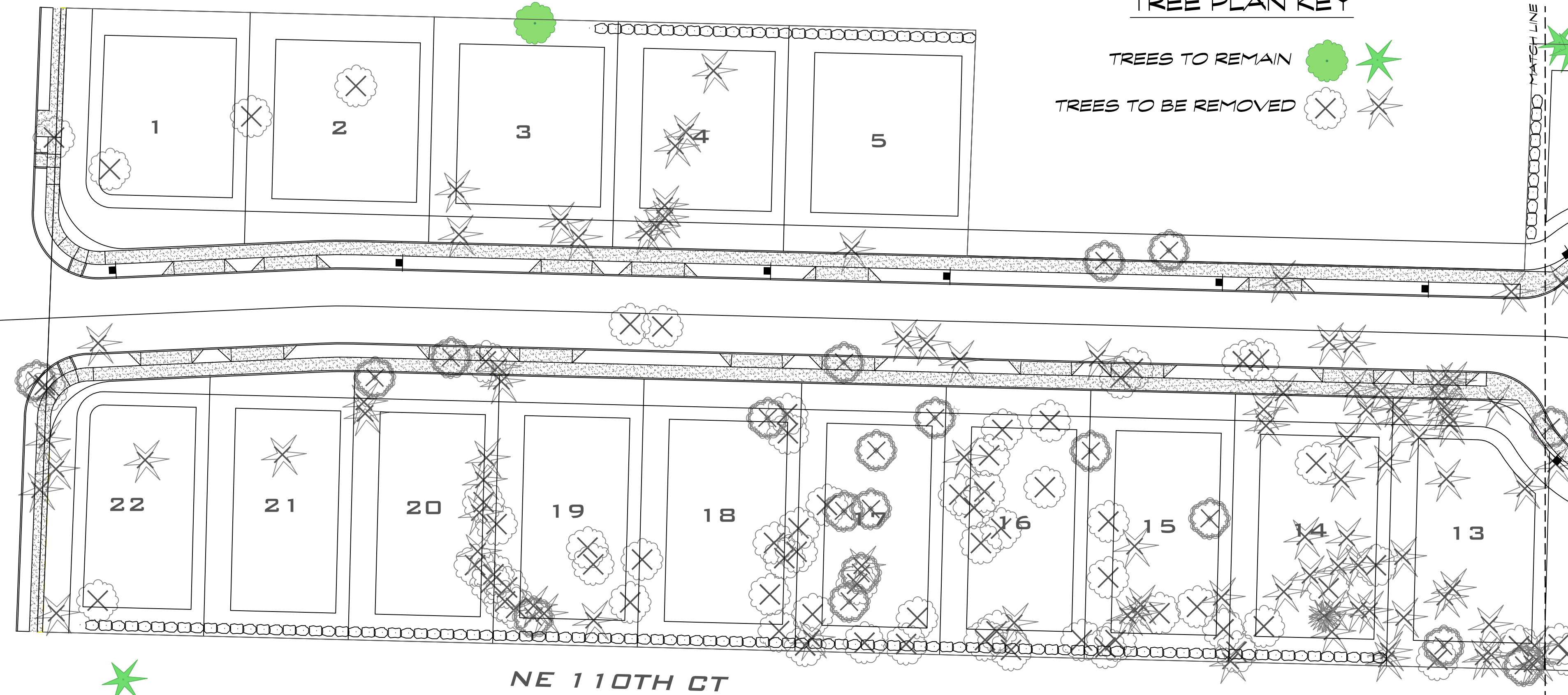


Figure 1: Tree Inventory - Proposed Action & Brief Definition

	Removal	Impacted	Retained	Total
Landmark (>30")	20 = 4.4%	1 = 0.2%	7 = 1.5%	28 = 6.1%
Significant (6"-30")	234 = 51.1%	4 = 0.9%	192 = 41.9%	430 = 93.9%
Totals	254 = 55.5%	5 = 1.1%	199 = 43.4%	458 = 100%
Replacement Trees	294	0	0	294

Numbers are generated based on site conditions, proposed development, and City requirements. Significant trees are to be replaced at a 1:1 ratio; Landmark trees at a 3:1 ratio. Each significant tree removed beyond 35-percent retention must be replaced at a 3:1 ratio.

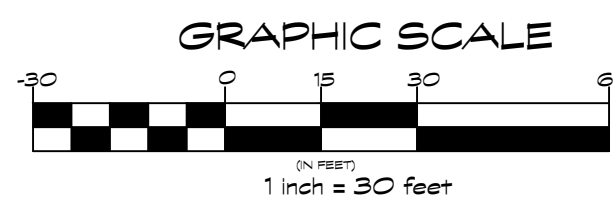
Including all of the trees located in the ECA/open space area, a total of 43.4 percent of all of the trees on the site will be retained.

Replacement Tree Calculations
 Healthy Significant trees and to be replaced at 1:1 = 1 x 234 = 234 replacement trees. Landmark trees to be replaced at 3:1 = 3 x 20 = 60 replacement trees.

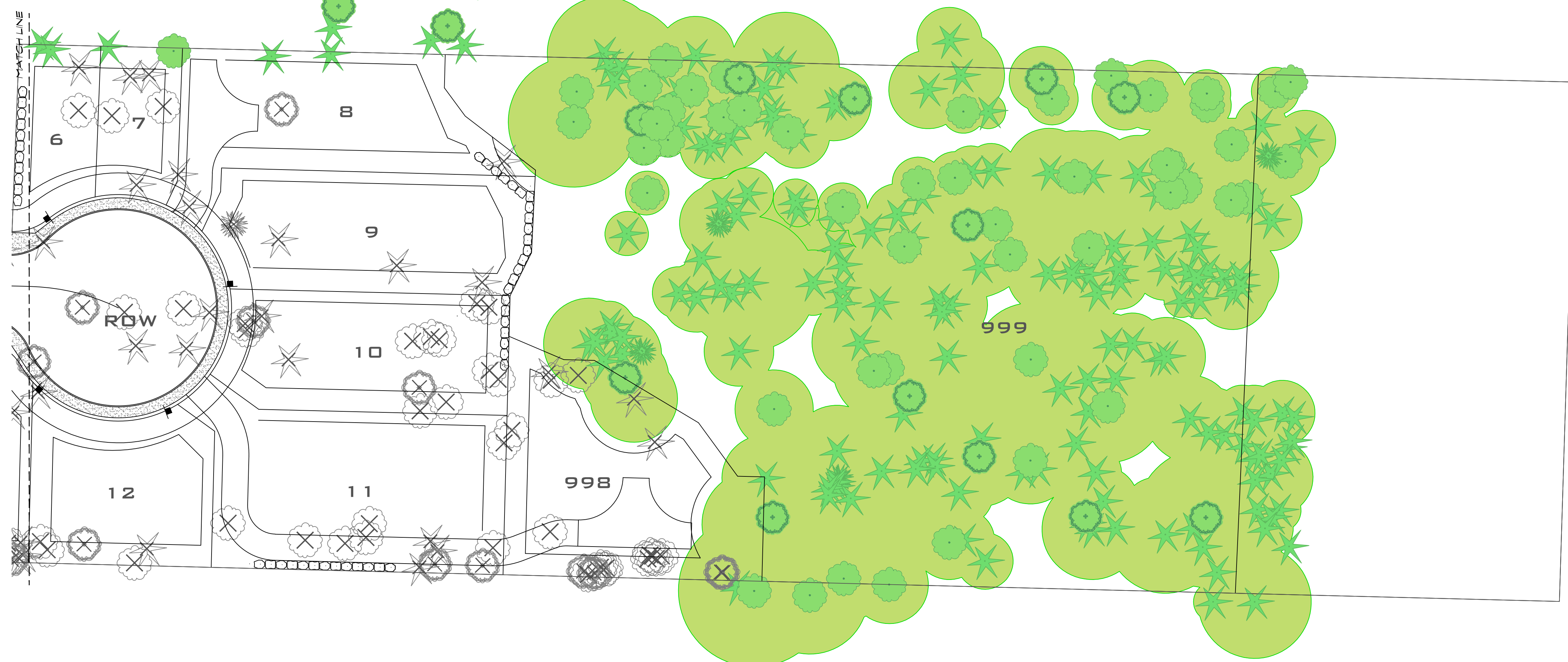
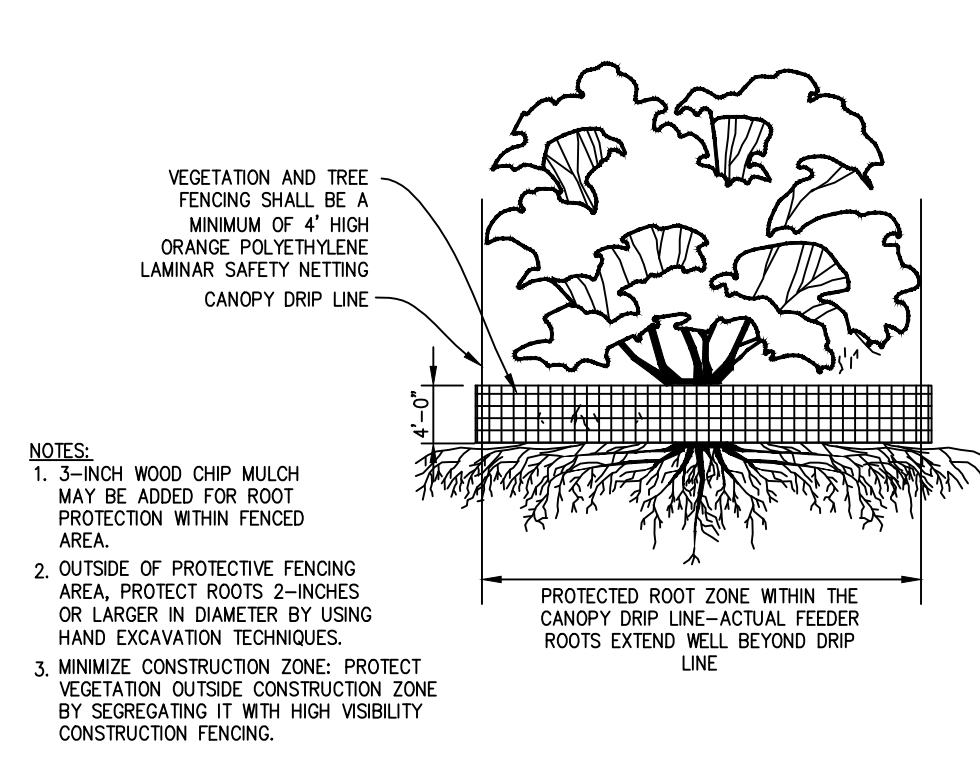
TREE REPLACEMENT
 TOTAL REPLACEMENT TREES REQUIRED = 294 TREES
 TOTAL REPLACEMENT TREES REPLACED = 123 TREES
 TOTAL NUMBER OF FEE-IN-LIEU OF TREE REPLACEMENT TREES = 171 TREES

PUBLIC NOTICE TREE PLAN


SCALE: 1"=30'-0"



PRESERVING VEGETATION



CRAMER DESIGN CONSULTANTS, INC.
 LANDSCAPE ARCHITECT
 15099 242ND STREET SE
 BOTHELL, WA 98021
 425-241-6256

STATE OF WASHINGTON
 REGISTERED
 LANDSCAPE ARCHITECT

 KYLE L. CRAMER
 CERTIFICATE NO. 634

ROSE HILL DEVELOPMENT
 PUBLIC NOTICE TREE PLAN
 REDMOND, WA 98033

SHEET	OF
T-01	1